

2000 Generation Load Cells

Heavy Duty Load Cell SDLX



Special Features

- Made in Denmark
- Robust capacitive technology
- Patented high reliability capacitive sensor
- OIML R60 accuracy classes up to C3
- High tolerance of up to 500% overload
- Stainless steel
- Laser welded
- Hermetically sealed to IP68
- High accuracy, High resolution
- Digital filters
- Capacity (E_{max}): 300kg
- Accuracy: OIML class C3
- Cable length up to 100meters
- Calibration independent of cable length
- Load cell cable replaceable
- Easy mechanical and electrical installation
- Withstands welding voltages and ESD
- Optional special load cell cable
- [Examples SDLX Heavy Duty Load Cells](#)

Applications

Applications

- On-board truck weighing
- Process weighing
- Offshore/Marine applications
- Force measurement
- Mobile weighing
- Heavy duty applications

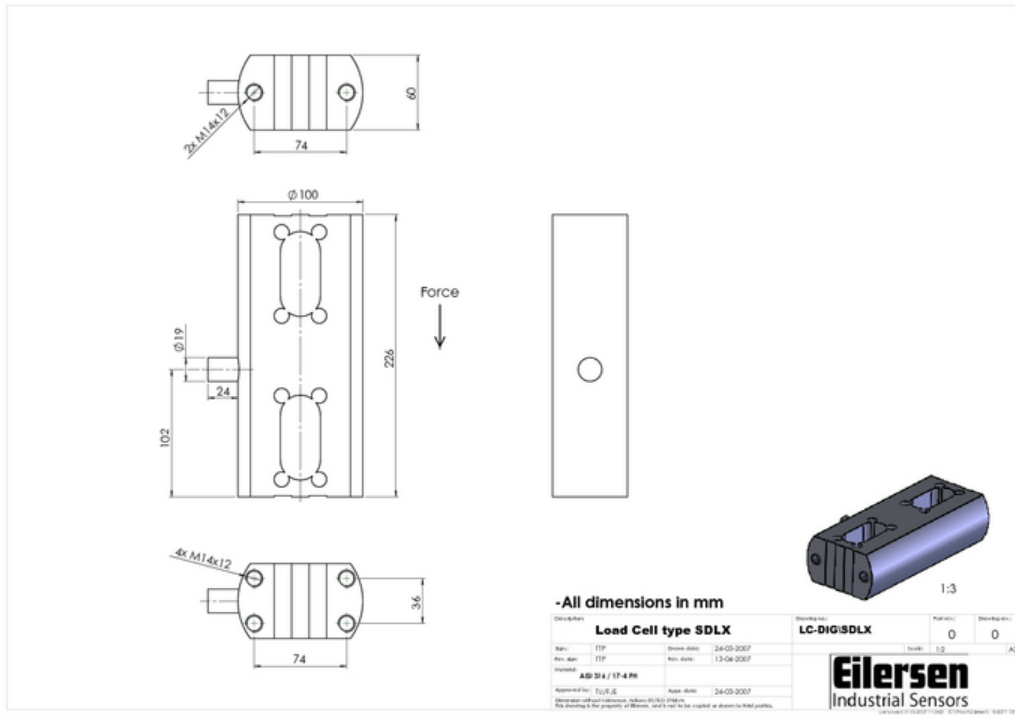
[Examples SDLX Heavy Duty Load Cells](#)



Specifications

- [R60-2000.1 SDLX OIML test certificate PDF](#)

Dimensions (mm)



Options

- Customized load cell capacity
- Load cell cable length 10, 20, 50 or 100meters
- Load cell cable type
- Special PE load cell cable available for freezing low temperature (can be used down to -50 degrees Celsius)
- Special Teflon load cell cable available for very high temperature (can be used up to 100 degrees Celsius)

Documentation

- [R60-2000.1 SDLX OIML test certificate PDF](#)
- [SDLX Heavy Duty Load Cell Dimensions PDF](#)
- [Load Cell type SDLX STEP 3D CAD File \(right click -> "Save Link As..."\)](#)
- [SDLX Mounting PDF](#)
- [Examples SDLX Heavy Duty Load Cells Examples SDLX Heavy Duty Load Cells](#)
- [Guideline Correct Mounting of BNC Connector \(UK\) PDF](#)

Disclaimer and Legal Information: The information on this web site is provided in connection with products supplied by Eilersen Electric A/S and affiliated companies ("Eilersen"). No license, expressed or implied, to any intellectual property rights is granted by this information or any documents on the web site. Eilersen assumes no liability and disclaims any expressed or implied warranty, relating to sale and/or use of Eilersen products including liability or warranties relating to fitness for a particular purpose. The information on this web site is provided as a service and for information purpose only and is subject to change without prior notice. Eilersen assumes no responsibility or liability whatsoever for any errors or inaccuracies that may appear on this web site. Eilersen is not responsible for any loss of hardware, software or files, caused by the use of the web site or elements downloaded or used from/on the web site. Hence Eilersen makes no warranty, that the web site or product or services provided on the web site (including free software downloads) will meet your requirements or will be uninterrupted, timely, secure or without errors, or that the web site or the servers used by Eilersen are free of viruses or bugs or are fully functional or accurate.